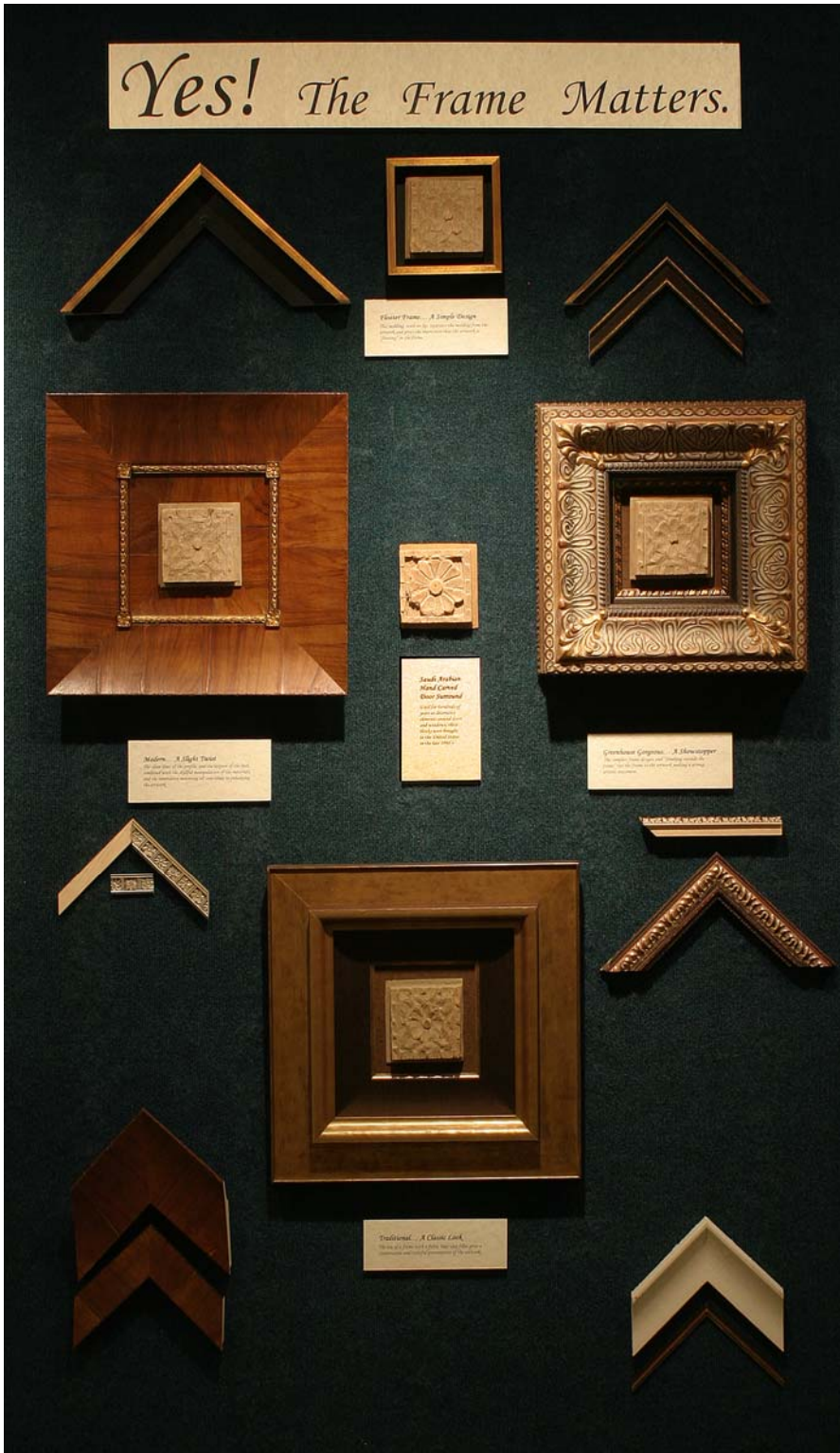


per your request...

July 15, 2010 Facebook Posting



It does!

If you have an item you want framed several questions should be asked:

- Is it a major or minor piece?
- Is cost a factor?
- Is the environment in which it will hang a factor?
- Is it so special that no limitations are set?

These questions and more should be considered when selecting the correct frame for your item and you.

The following examples will help you...



This historical 4" x 4" x 1 1/4" hand carved wooden decorative element was used around doors and windows in Saudi Arabia. It was brought to the United States in the 1960's by the client's grandparents.

A Simple Design

A floater frame was used; a floater frame has no lip and traditionally a black inside, this gives the impression the artwork is floating in the frame. The rubbed gold face of the floater complements the finish of the wood carve.

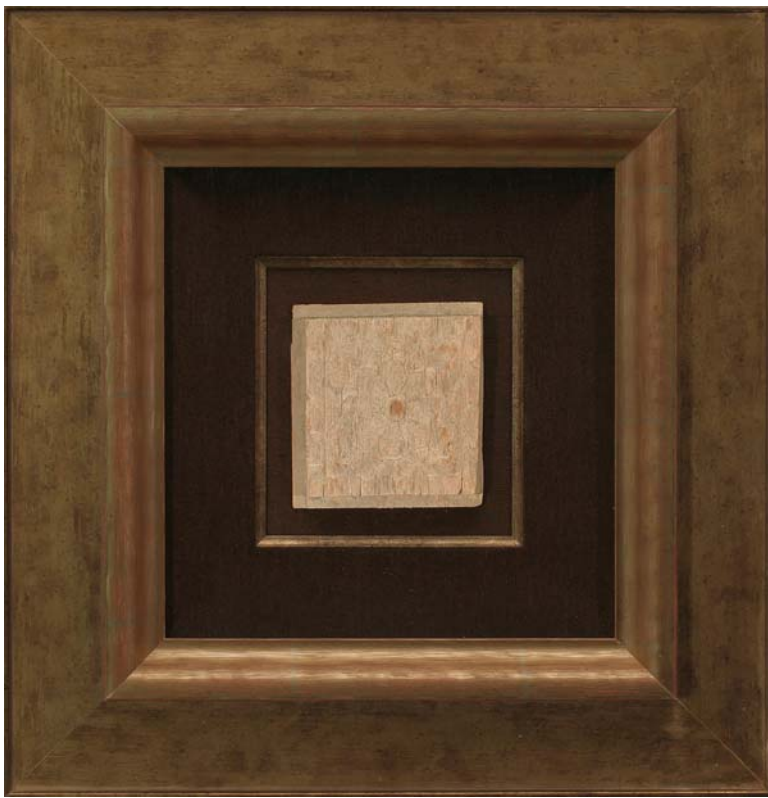
This look gives a clean modern presentation.



A Classic Look

The use of a frame with a fabric liner and fillet gives a conservative and tasteful presentation. The frame repeats the wood carve's color and shape. The brown marquee fabric visually sets the wood carve off the background. The texture in the frame and fabric both enhance the wood carve.

This look gives an elegant and traditional presentation.



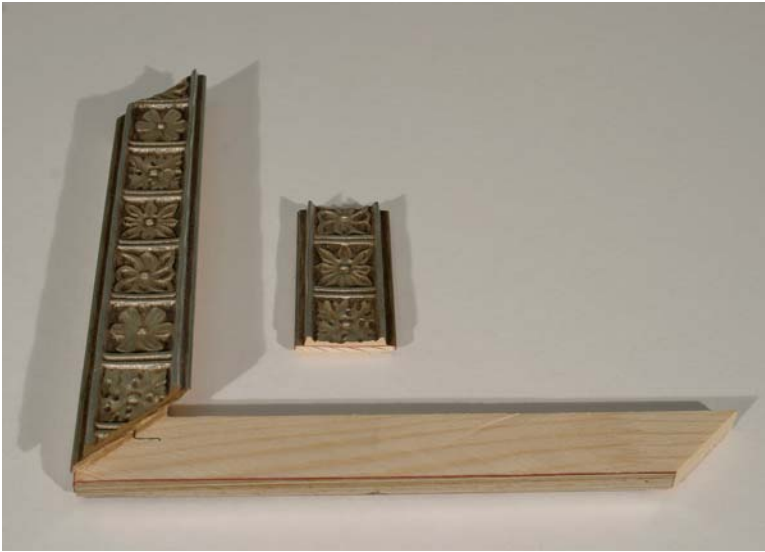
A Modern Design

The clean lines of the frame profile and the texture of the burl wood, combined with the skillful manipulation of the framing materials and the innovative mounting all contribute to enhance the artwork.

The wood carve is mounted on top of the inside burl frame. The gold spiral/bead frame caps the inside burl frame. The outside frame is measured precisely to fit the gold spiral frame's outside lip. The flower "compos" were then glued in place. The presentation enhances the grain of the wood carve with the burls.



This look gives a modern textural feel to the piece.



To create the composites:
The original frame profile is on the left.
The flower composite design was cut off the frame face using a table saw. Each composite flower was hand sanded to the proper size, gilded with composition gold, and toned. The flower composite mimics the wood carve.

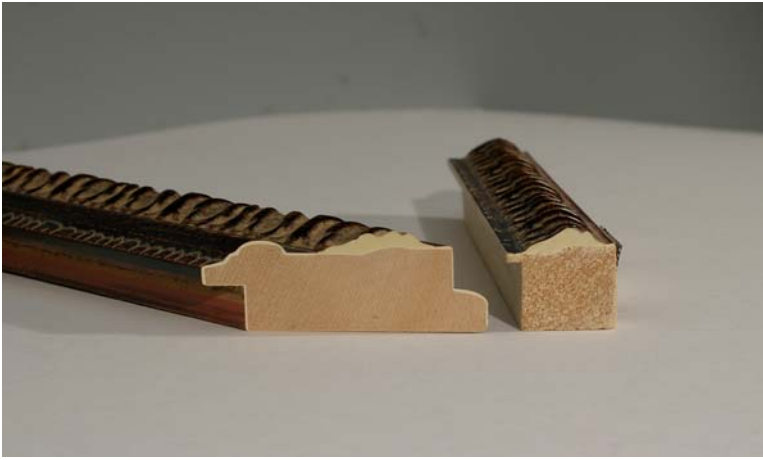
and Greenhouse Gorgeous!

By “thinking outside the frame” and creating a complex design, the wood carve is center stage.

The wood carve is float mounted on a brown marquee fabric. The first of four frames, a petal-like fillet, is used. The specially cut angled frame surrounds the fillet. The fillet and angled frame give the height needed to place museum glass over the wood carve. The Middle Eastern motif of the third frame is “match pattern joined.” The motif and the composite corners help to keep the eye centered on the wood carve. The fourth frame, a small extender, adds a nice surprise.



This gives a strong artistic statement.



To create the extender frame:
To make the frame lay flush against the wall, another moulding was used. This mouldings back edge and rabbet lip were cut off and a smaller rabbet lip was cut. The frame was layed on its back mitered and assembled.



To create the angled frame:
The table saw blade was moved to the desired angle, the moulding was fed through, removing the extra wood. The altered moulding was then mitered at a 45° angle and assembled. These changes allowed for the multiple stacking of frames



This view allows you to see the depth and detail of this Greenhouse Gorgeous piece!

Oh yeah...

TRU VUE MUSEUM GLASS SALE

\$10.00 off any and all sizes!!!

Until July 31, 2010

Thanks,
Deborah
Elizabeth